

Sliabh Bawn Wind Farm

Project Newsletter – September 2015



Project Update

Construction works for the Sliabh Bawn Wind Farm are underway since June 2015.

Key highlights:

- New site entrance at Tooreen completed and operational
- Substation earth works substantially complete
- Works on turbine foundations underway
- 4km temporary public recreational route now open

For further details and information on the Sliabh Bawn Community Benefit Scheme please see inside...

In this issue

Page 2 Construction Progress Update

Page 3 Access to Doughill Forest During Construction

Page 4/5 Sliabh Bawn Community Benefit Scheme & Information Evening

Page 6 Project Timeline & Contact Details





Construction Progress

Construction works for the Sliabh Bawn Wind Farm began in June 2015. There are currently 40 construction and supervisory staff on site.

Works underway:

- In recent weeks, works have been undertaken at the north-eastern end of the site. These works were part of a dedicated construction site entrance off the R371 at Tooreen. The entrance is now completed and operational.
- A 350 metre section of the public road (L14253) commonly used to access the forest from the west at Ballyduffy, is now closed to facilitate construction. Coillte has provided a 4km alternative recreational route through part of Doughill Forest/ Sliabh Bawn Mountain. The recreational route can be accessed by using the L14253, as far as Curraghduffy, as shown on the map opposite.
- Earth works on the substation site are underway and are due to be completed by October.
- Works on the turbine foundations have commenced.

Traffic Management

A Traffic Management Plan is in place for vehicles using the new site entrance at Tooreen, off the R371.

Coillte anticipates that impacts on local road users will be minimal.

However, there are a number of main deliveries that will involve larger loads at certain time periods currently envisaged as August to December 2015 and spring to summer 2016.

Coillte is committed to keeping people informed of major truck deliveries to the site in advance through the Sliabh Bawn project website www.sliabhbawnwindfarm.ie

Deliveries to site - August to December 2015

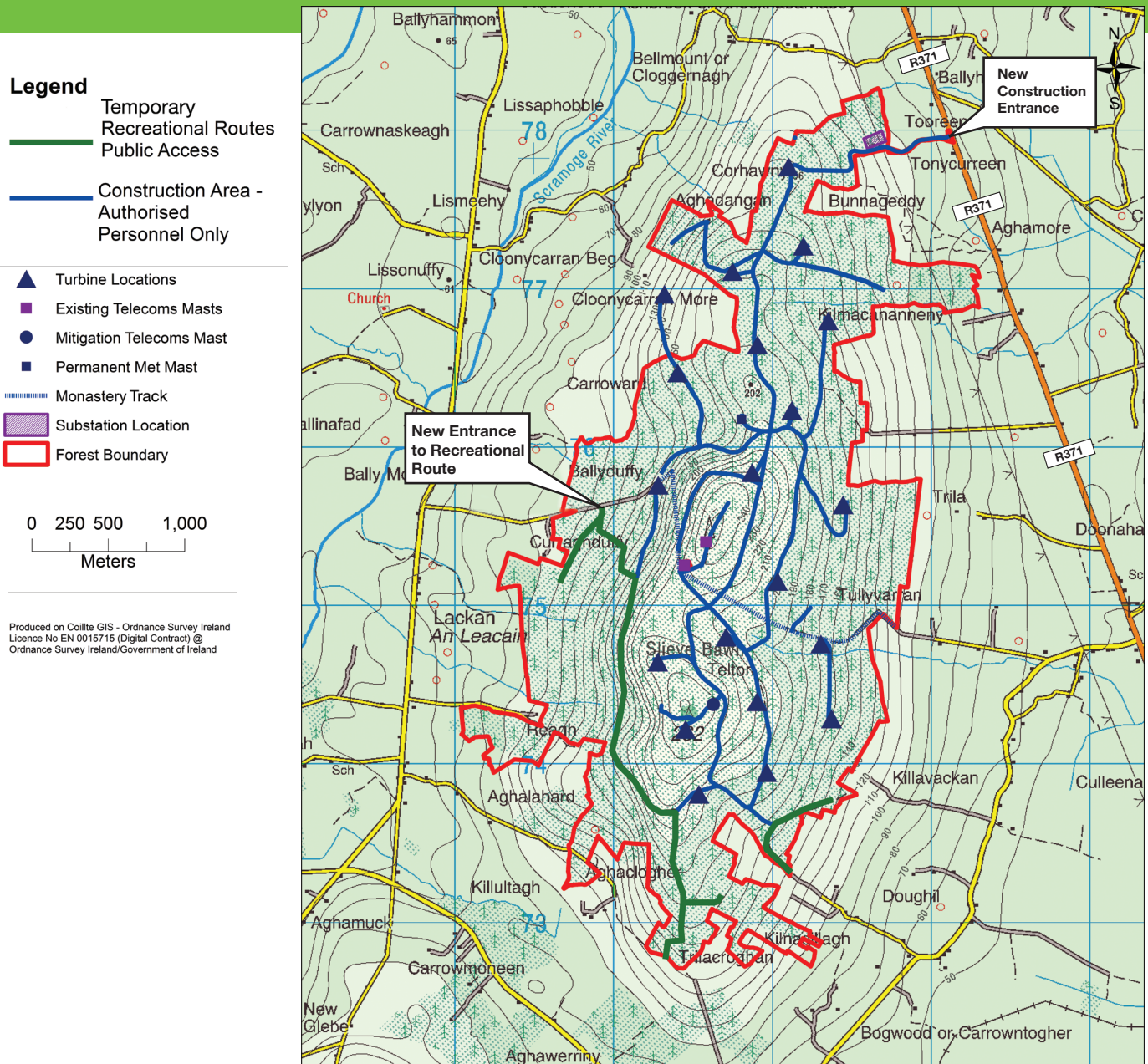
From the end of August until December 2015, delivery trucks will be bringing concrete to the site for use in the turbine foundations. These deliveries will come from Castlemine via Strokestown (19.5km) on the R360 road.

Access to Doughill Forest During Construction

To protect public health and safety during construction, access to some sections of Doughill Forest is restricted to authorised personnel only. We apologise for any inconvenience this may cause.

Coillte has provided public access to a 4km temporary public recreational route through part of the forest, as shown in green on the map below, which will remain open throughout construction. Signs have been placed at all entrances to Doughill Forest.

In addition, members of the public will continue to enjoy access to the Monastery Track for the annual pilgrimages which take place each Easter and August. Coillte will reinstate access to Doughill Forest, on a phased basis, as soon as possible following construction in the summer of 2017.





Sliabh Bawn Community Benefit Scheme

The Sliabh Bawn Community Benefit Scheme will provide the following for the local community:-

- A Community Fund - totalling €87,000 (index linked) each year over the 25 year lifetime of the wind farm to benefit local projects and initiatives;
- Significant investment in leisure and recreation facilities at Doughill Forest on Sliabh Bawn Mountain.

Community Fund - Who will benefit?

The Community Fund will prioritise projects and initiatives that support and benefit the area surrounding Sliabh Bawn mountain.

Community Fund - Who can apply?

The fund is available to community and voluntary groups, Not for Profit groups or organisations with a charitable status. A key criteria is that the fund is used to benefit the local community as a whole.

What types of projects/activities will we fund?

- 1. Recreation:**
Funds are available to community groups and organisations to develop community-based sport and recreation projects/activities.
- 2. Health and Wellbeing:**
Funds are available to groups and organisations to run projects/activities that will have a positive impact on the health and wellbeing of the local area.
- 3. Culture and Heritage:**
Funds are available to community groups and organisations for projects/activities that promote cultural awareness and preserve the local heritage.
- 4. Environmental Sustainability:**
Funds are available to groups and organisations to enhance the local natural and built environment for community centred projects/activities and energy efficiency schemes.
- 5. Tourism:**
Funds are available to community groups and organisations to develop new and strengthen existing tourism products, including improving marketing and visitor servicing with the aim of increasing the contribution tourism makes to the local economy.



Community Fund – Application Process

The fund will be directly operated and administered by Coillte with the support of a Grant Making Organisation.

A clear and well governed process will be employed and full Terms & Conditions will be included in an Application Form, which will be made available at the forthcoming community benefit information evening and on the project website.



Sliabh Bawn Community Benefit Information Evening

Coillte is hosting a drop-in information evening:

on Wednesday 30th September 2015
from 4pm to 8pm
at The Percy French Hotel, Strokestown

Members of the project team will be available to provide information and answer your questions on:

Community Benefit Scheme

- Community Fund
- Recreation Plan

Construction Process

Coillte invites all members of the community to attend and looks forward to meeting you there.

Recreation Plan

In addition to the Community Fund, Coillte will make a significant investment to develop leisure and recreation facilities at Doughill Forest on Sliabh Bawn Mountain.

“We know how much people care about local heritage sites including the Monastery Track, the Church ruin and the Jubilee Cross, so we are ensuring that the Recreation Plan protects and enhances these features,” says Ger Hynes, Project Manager.

Recreation @ Doughill Forest

The following recreational amenities will be developed:

- Six Looped Trails for walking and fitness
- Monastery Track - improving and linking parts of the Monastery Track
- Equestrian Trail
- Trim Trail with outdoor exercise equipment
- Raised Viewing Platform with interpretative signage
- Picnic Area
- Car Parking.

Coillte intends that these amenities will open to the public in 2017.

Project timeline

June 2015	Construction commenced
Autumn/ Winter 2015	First call for applications for the Sliabh Bawn Community Fund (see www.sliabhbawnwindfarm.ie)
Summer 2016	Turbine installation commences
Winter 2016	Commissioning (testing) of turbines and substation
Spring 2017	Wind farm commences operation
Summer 2017	Access to sections of Doughill Forest reopen on a phased basis
Winter 2017	New and improved recreational amenities open - Full forest access restored

Keep in touch

Coillte is committed to keeping you up to date with the construction of Sliabh Bawn Wind Farm. Members of our project team are available locally and will continue to provide regular project updates through newsletters and the project website.

Please contact us with any observations or enquiries:-

Lo-call: 1890 92 78 36 (9am to 5pm Mon - Fri)

Email: sliabh.bawn@coillte.ie

Web: www.sliabhbawnwindfarm.ie

Write: Sliabh Bawn Project, Coillte,
Block B, Marlinstown Business Park,
Mullingar, Co. Westmeath



The Sliabh Bawn Wind Farm will

- produce clean electricity for homes, farms, hospitals, schools and businesses in Ireland;
- comprise 20 wind turbines and a substation;
- have an export capacity of 58 Megawatts (MW) which will supply the equivalent of approximately 37,700 households¹;
- contribute to the local economy by supporting local businesses.

¹Source: IWEA. 1MW = 650 households. 58MW = 37,700 households. Average household consumption 5,300 kWh.