



#### How will Coillte protect the local environment?

Ireland is moving toward a greener, more sustainable future based on reduced fossil fuel imports, lower CO<sub>2</sub> emissions and enhanced energy security. Coillte supports this energy transition.

Coillte's Wind Energy Team works alongside the Coillte Forest management and environmental teams to ensure that our wind farm projects conform to all statutory requirements and best practice guidelines in relation to environmental protection.

The planning permission granted by An Bord Pleanála (ABP) in March 2012 requires Coillte to construct and operate the Sliabh Bawn Wind Farm in accordance with a number of planning conditions.

This is to protect the environment, including the community, at all stages, from construction, to commissioning and operation of the wind farm. This will include the presence of an archaeologist on site throughout excavation works.

A Traffic Management Plan will be implemented to ensure as far as possible that local people are not inconvenienced due to the project and to protect health and safety. Regular traffic updates will be provided to the local community during construction.

#### Turbine Locations and Setback

The turbine locations have been carefully selected and distributed across the mountain to minimise any potential impact on residential properties. All turbines within the development will be set back from houses by a distance greater than 700 metres which is well in excess of the recommended national guidelines for wind energy development.

#### Noise and Shadow Flicker

Advances in modern turbine technology have resulted in quieter turbines with lower noise emissions. As part of the environmental studies completed for the project, noise levels have been modelled and assessed from a range of locations around the site under different conditions to ensure that it remains within the limits set out in the planning permission.

Similarly, shadow flicker has also been modelled and studied to ensure that it remains within the limits set out in the planning permission and Coillte will continuously monitor the situation to ensure that it does not adversely impact upon surrounding dwellings.

Roscommon County Council is the regulatory authority that will ensure the conditions of the planning permission are adhered to throughout construction and during the longer term operation of the wind farm.



#### About Coillte

**coillte** Coillte's core purpose is to enrich lives locally, nationally and globally through the innovative and sustainable management of natural resources.

Coillte is a commercial semi state company operating in forestry, land based businesses, renewable energy and panel products.

Established in 1988, the company currently employs approximately 1,000 people. It owns over 445,000 hectares of land, about 7% of the land cover of Ireland.

Coillte's forests are managed in accordance with strict environmental, social and economic criteria.

#### About Coillte's Sliabh Bawn Project Team

Following a competitive tender process Coillte appointed a construction and site supervision team to undertake the works for the Sliabh Bawn project.

- The civil works contractor is Denis Moriarty The Kerries Ltd. (DMKL) from Tralee. DMKL has been in existence since 1970. The company has successfully completed over twenty wind farm civil contracts within the last ten years and are recognised specialists in wind farm construction throughout Ireland, the UK and Europe.
- Wind Prospect and Jennings O'Donovan & Partners are the project engineers with Coillte's representatives on site to supervise construction.

#### How can I get in touch?

Coillte will be providing regular updates on the Sliabh Bawn project through newsletters and the project website.

Please feel free to contact Coillte's project team by phone or email to enquire or make observations about any aspect of the project or the work being carried out.

- Lo-call: 1890 92 78 36 (9am to 5pm Monday to Friday)

- Email: [sliabh.bawn@coillte.ie](mailto:sliabh.bawn@coillte.ie)

- Web: [www.sliabhbawnwindfarm.ie](http://www.sliabhbawnwindfarm.ie)

- Write: Sliabh Bawn Project, Coillte, Block B, Marlinstown Business Park, Mullingar, Co. Westmeath.



Printed in Co. Roscommon on sustainably sourced paper

# Sliabh Bawn Wind Farm

## Project Newsletter – February 2015





Artist's impression of the Sliabh Bawn Wind Farm

## Project Overview

Welcome to the first project newsletter for Coillte's Sliabh Bawn Wind Farm, Co. Roscommon.

The purpose of this newsletter is to keep you up to date with the development of Sliabh Bawn Wind Farm as it progresses to construction and into operation.

The Sliabh Bawn Wind Farm will:

- produce clean electricity for homes, farms, hospitals, schools and businesses in Ireland
- comprise 20 wind turbines and a substation
- have an export capacity of 58 Megawatts (MW) which will supply the equivalent of approximately 37,700 households<sup>1</sup>
- include a Community Benefit Scheme to deliver improved local amenities/recreational facilities and support for local projects
- contribute to the local economy by supporting local businesses.

<sup>1</sup>Source: IVEA. 1MW = 650 households. 58MW = 37,700 households. Average household consumption 5,300 kWh.

## What is happening now?

### In late spring 2015, Coillte plans to start construction of the Sliabh Bawn Wind Farm.

In preparation for the start of construction, minor enabling works are now getting underway including some tree felling within the forest. These minor works will continue during February and March.

A traffic management plan will be implemented to ensure, as far as possible, that local people are not inconvenienced due to the project and to protect health and safety.

A separate dedicated construction site entrance will be constructed off the R371 at Tooreen and this will become the permanent new entrance for commercial forestry activities in the future.

Please refer to map for location of new site entrance

## Project Timeline

2008 – 2010	<ul style="list-style-type: none"> <li>Pre-planning stage</li> <li>Feasibility studies</li> <li>Environmental impact studies</li> <li>Community engagement</li> <li>Preparation of planning application</li> </ul>
August 2010	<ul style="list-style-type: none"> <li>Planning application submitted</li> </ul>
March 2012	<ul style="list-style-type: none"> <li>Planning permission granted</li> </ul>
Winter - Spring 2015	<ul style="list-style-type: none"> <li>Minor enabling works</li> <li>Community engagement</li> </ul>
Late Spring 2015	<ul style="list-style-type: none"> <li>Construction begins and continues for 20 months</li> <li>Community engagement</li> </ul>
Spring 2016	<ul style="list-style-type: none"> <li>Commence installation of turbines</li> <li>Community engagement</li> </ul>
Summer 2016	<ul style="list-style-type: none"> <li>Commissioning (testing) of turbines and substation begins</li> <li>Community engagement</li> </ul>
Winter 2016	<ul style="list-style-type: none"> <li>Operation</li> <li>Community engagement</li> </ul>
Spring 2017	<ul style="list-style-type: none"> <li>Access to sections of Doughill Forest reopens on a phased basis</li> <li>Construction of recreational facilities</li> <li>Community engagement</li> </ul>
Winter 2017	<ul style="list-style-type: none"> <li>New and improved amenities open</li> <li>Full forest access restored</li> <li>Community engagement</li> </ul>



## How will my community benefit?

As a commercial semi state company, Coillte supports the development of sustainable energy in Ireland. We are deeply committed to open and transparent consultation with local communities and other stakeholders about our projects.

Under our Community Benefit Policy for the Sliabh Bawn project, we are committed to:

- Being open and communicating proactively** with the local community throughout the project and responding to community needs that arise
- Improving local amenity and recreation:** Coillte will provide new and enhanced recreational amenities with greater accessibility to the forest including:
  - Looped walks: six looped trails for walking and fitness
  - Monastery track: to improve and link existing parts of the Monastery track
  - Equestrian zone: developing a trail exclusively for horses
  - Viewing tower: with a raised platform and interpretative signage
  - A picnic area
  - A car park
- Supporting the local economy:** Coillte and its construction team are committed to supporting local businesses, for example when purchasing fuel for machinery, raw materials for construction or when renting accommodation

- Protecting the environment** by replanting trees to replace those removed from Doughill Forest

- Providing other community benefits:** Coillte welcomes ideas or suggestions from the local community about ideas or projects that they feel would benefit the local area.

## Will I be able to access Doughill Forest?

While Doughill Forest is not a recreational forest, Coillte operates an open forest policy and the public currently access the forest for walking and other outdoor leisure activities.

For health and safety reasons, access to Doughill Forest will be temporarily closed from April 2015. The current entrance to the forest at Curraghduffy will be closed throughout construction. Beginning in early 2017, access to sections of the forest will reopen to the public on a phased basis.

As part of its commitment to the local area, Coillte will be adding new and improved recreational facilities for members of the public to enjoy when access to the forest reopens in 2017.

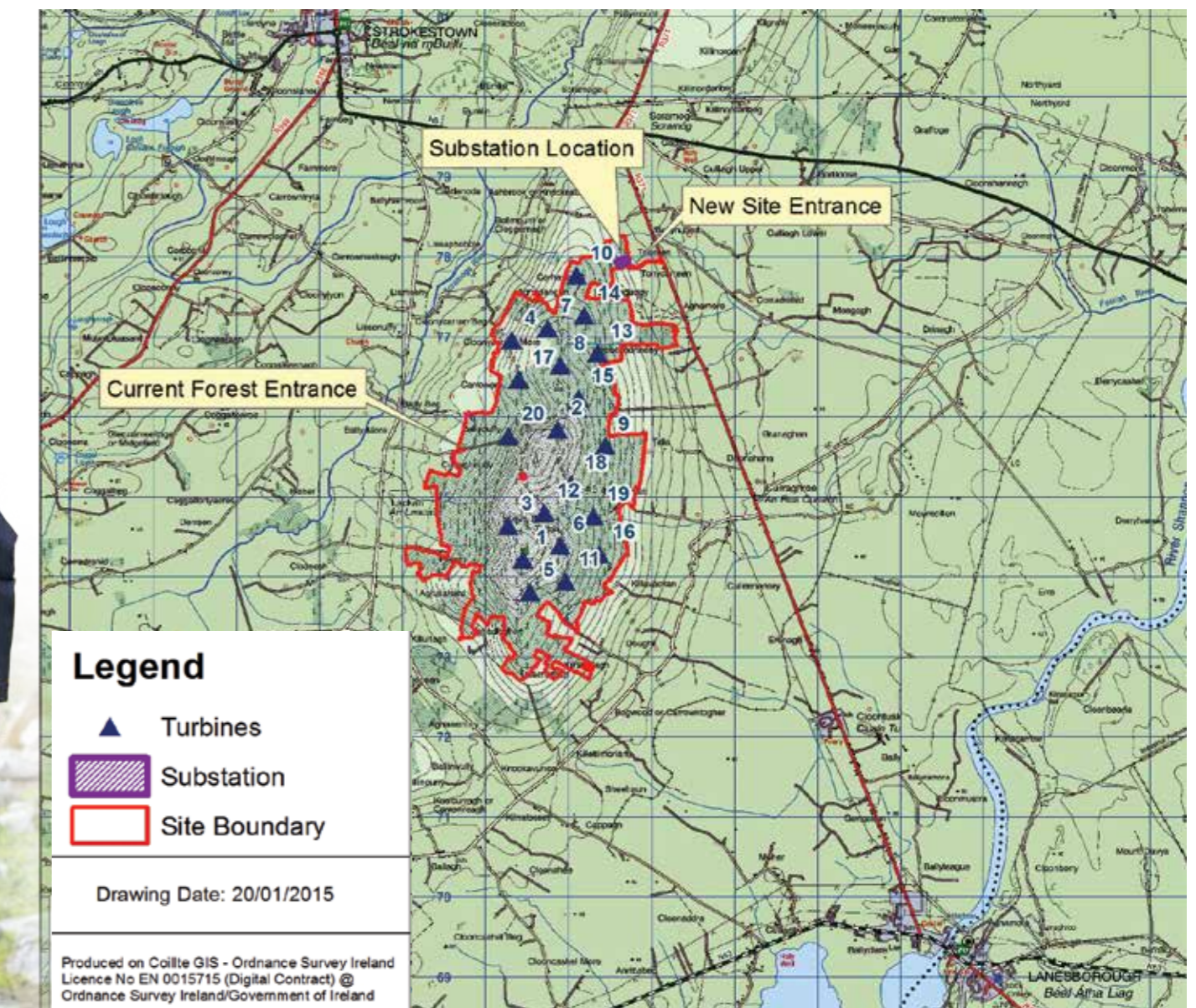
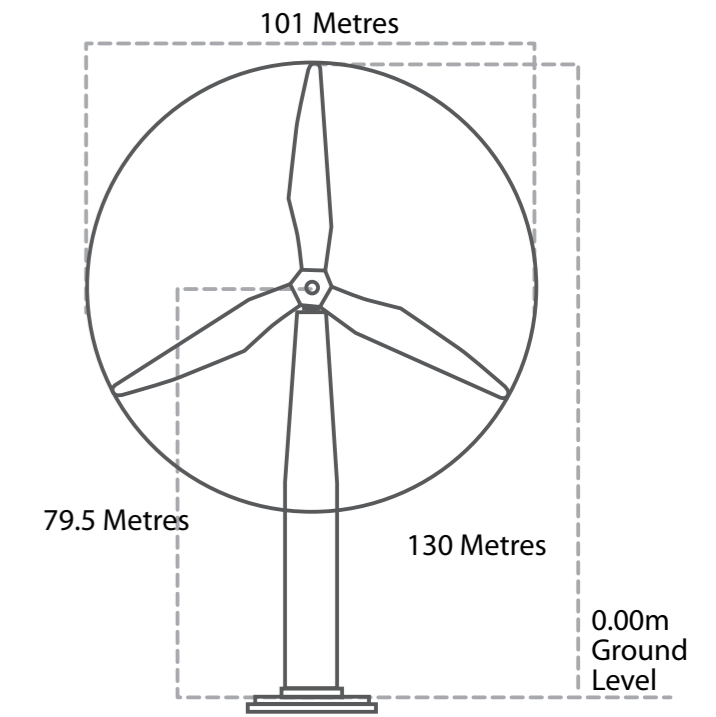


## What turbines will be used?

The Sliabh Bawn Wind Farm will comprise 20 X 3.2MW turbines. The project will have a maximum export capacity of 58 MW.

With fewer moving parts compared to conventional geared wind turbines, these direct drive wind turbines offer improved performance, reliability, and maintainability with reduced noise emissions.

A substation (208m<sup>2</sup>) will also be built at the north eastern end of the site and the wind farm will connect into the existing 110kV power line which crosses the site.



Produced on Coillte GIS - Ordnance Survey Ireland Licence No EN 0015715 (Digital Contract) @ Ordnance Survey Ireland/Government of Ireland